

IG MANAGED PAYOUT PORTFOLIO WITH GROWTH

Annual Management Report of Fund Performance

For the Year Ended March 31, 2024

This Annual Management Report of Fund Performance contains financial highlights but does not contain the complete annual financial statements of the investment fund. You may obtain a copy of the annual financial statements, at no cost, by calling 1-888-746-6344 (1-800-661-4578 if you live in Quebec) or by writing to us at 447 Portage Avenue, Winnipeg, Manitoba, R3B 3H5 (2001, boulevard Robert-Bourassa, bureau 2000, Montreal (Quebec), H3A 2A6 if you live in Quebec), or by visiting the SEDAR+ website at www.sedarplus.ca.

Securityholders may also contact us using one of these methods to request a copy of the investment fund's interim financial report, proxy voting policies and procedures, proxy voting disclosure record or quarterly portfolio disclosure. For more information, please refer to the Fund's Simplified Prospectus and Fund Facts, which may also be obtained, at no cost, using any of the methods outlined above.

For the Fund's current net asset values per security and for more recent information on general market events, please visit our website at www.ig.ca.

References to "Consultant" or "Consultants" mean "Representative" or "Representatives" in Quebec.

A NOTE ON FORWARD-LOOKING STATEMENTS

This report may contain forward-looking statements that reflect our current expectations or forecasts of future events. Forward-looking statements include statements that are predictive in nature, depend upon or refer to future events or conditions, or include words such as "expects", "anticipates", "intends", "plans", "believes", "estimates", "preliminary", "typical" and other similar expressions. In addition, these statements may relate to future corporate actions, future financial performance of a fund or a security and their future investment strategies and prospects. Forward-looking statements are inherently subject to, among other things, risks, uncertainties and assumptions that could cause actual events, results, performance or prospects to differ materially from those expressed in, or implied by, these forward-looking statements. These risks, uncertainties and assumptions include, without limitation, general economic, political and market factors in North America and internationally, interest and foreign exchange rates, the volatility of global equity and capital markets, business competition, technological change, changes in government regulations, changes in securities laws and regulations, changes in tax laws, unexpected judicial or regulatory proceedings, catastrophic events, outbreaks of disease or pandemics (such as COVID-19), and the ability of manager to attract or retain key employees. The foregoing list of important risks, uncertainties and assumptions is not exhaustive. Please consider these and other factors carefully and do not place undue reliance on forward-looking statements.

The forward-looking information contained in this report is current only as of the date of this report. There should not be an expectation that such information will in all circumstances be updated, supplemented or revised whether as a result of new information, changing circumstances, future events or otherwise.

IG MANAGED PAYOUT PORTFOLIO WITH GROWTH

ANNUAL MANAGEMENT REPORT OF FUND PERFORMANCE | For the Year Ended March 31, 2024

Management Discussion of Fund Performance

June 6, 2024

This Management Discussion of Fund Performance presents the portfolio management team's view on the significant factors and developments that have affected the Fund's performance and outlook in the year ended March 31, 2024 (the "period"). If the Fund was established during the period, "period" represents the period since inception.

In this report, "IGIM" and "the Manager" refer to I.G. Investment Management, Ltd., the manager of the Fund. In addition, net asset value ("NAV") refers to the value of the Fund as calculated for transaction purposes, on which the discussion of Fund performance is based.

Please read *A Note on Forward-Looking Statements* on the first page of this document.

Investment Objective and Strategies

The Fund intends to provide investors with a diversified portfolio solution that provides a steady flow of income with a secondary focus on long-term capital stability by investing in Underlying Funds and/or directly in securities. Under normal market conditions, exposures will generally be kept within 40% to 60% fixed income and 40% to 60% equity. In addition, the Fund may also invest in other asset classes.

Risk

The risks of the Fund remain as discussed in the Fund's Simplified Prospectus.

The Fund is suitable for long-term investors looking for income with a capital stability component who wish to hold a diversified portfolio in a single investment and who have a low to medium tolerance for risk.

Results of Operations

Investment Performance

The performance of all series in the current and previous periods is shown in the *Past Performance* section of the report. Performance will vary by series primarily because fees and expenses differ between series, or because securities of a series were not issued and outstanding for the entire reporting period. Please refer to the *Fund Formation and Series Information* section of this report for the varying management and administration fees payable by each series. The following comparison to market indices is intended to help investors understand the Fund's performance relative to the general performance of the markets. However, the Fund's mandate may be different from that of the indices shown.

For the year ended March 31, 2024, the Series F securities returned 6.5% (after deducting fees and expenses paid by the Fund). In comparison, the FTSE Canada Universe Bond Index returned 2.1%, the S&P 500 Index returned 30.0% and the MSCI EAFE (Net) Index returned 15.3%.

Within the S&P 500 Index, communication services, information technology and financials were the strongest sectors in Canadian dollar terms, while utilities, consumer staples and real estate were the weakest.

Within the MSCI EAFE (Net) Index, Italy, Denmark and Japan were the strongest-performing markets in Canadian dollar terms, while Hong Kong, Portugal and Finland were the weakest. The information technology, financials and industrials sectors were the strongest performers, while consumer staples, utilities and communication services were the weakest.

The Fund outperformed the FTSE Canada Universe Bond Index due in part to its exposure to equities. The Fund underperformed the S&P 500 Index and the MSCI EAFE (Net) Index due in part to its exposure to fixed income.

Mackenzie Global Equity Income Fund, representing about 50% of net assets at period-end, contributed the most to the Fund's performance, and Mackenzie Sovereign Bond Fund, representing about 9% of net assets at period-end, detracted the most from the Fund's performance.

Net Assets

The Fund's net assets decreased by 9.5% during the period to \$348.9 million. This change was composed primarily of \$20.5 million in net income (including any interest and/or dividend income) from investment performance, after deducting fees and expenses, and a decrease of \$57.3 million due to net securityholder activity (including sales, redemptions and cash distributions).

Fees and expenses

The management expense ratio ("MER") for each series during the year ended March 31, 2024, was generally similar to the MER for the year ended March 31, 2023. Total expenses paid vary from period to period mainly as a result of changes in average assets in each series. The MERs for all series are presented in the *Financial Highlights* section of this report.

Recent Developments

Global equities rose over the period as central banks slowed the pace of interest rate increases. Gains in the U.S. equity market came largely from a small number of mega-capitalization stocks. The global economy was resilient, and employment remained strong. Inflation slowed but remained slightly above central bank targets. After July 2023, the U.S. Federal Reserve and the Bank of Canada held their policy rates steady. Treasury yields reached peak levels and then fell in response to the policy shift.

Other Developments

Effective May 10, 2024, Series A, Series A-RDSP, Series J DSC, Series J DSC-RDSP, Series T DSC and Series T JDSC were redesignated as Series B, Series B-RDSP, Series J NL, Series J NL-RDSP, Series T NL and Series T JNL, respectively.

Related Party Transactions

I.G. Investment Management, Ltd. is the Manager, Trustee and Portfolio Advisor of the Fund. The Fund is offered through the Consultants of Investors Group Financial Services Inc. and Investors Group Securities Inc., together referred to as the Distributors. The Manager, Portfolio Advisor, Distributors and Trustee are, indirectly, wholly owned subsidiaries of IGM Financial Inc.

The following sub-advisor provided investment services to the Fund:

- Mackenzie Financial Corporation

Mackenzie Financial Corporation is a wholly owned subsidiary of IGM Financial Inc.

The Fund paid a management fee to the Manager and Portfolio Advisor for management and portfolio advisory services (see *Management Fees*).

The Fund also paid the Manager an administration fee and in exchange the Manager paid the operating costs and expenses of the Fund, except for certain specified costs.

The Fund paid the Distributors a service fee as compensation for providing or arranging for the provision of services to the Fund, including the issue or allotment of securities. A portion of the service fee for Series C and Tc is rebated by the Distributors to the Fund, for distribution to Series C and Tc securityholders quarterly, as outlined in the Prospectus. The Fund also paid the Distributors a distribution fee in recognition for distributing the Portfolio Funds to IG Wealth Management clients, including those who do not meet the minimum investment criteria for other IG Wealth Management Funds.

The Trustee is responsible for the overall direction of the affairs of the Fund. The Fund paid the Trustee a fee for its services.

IG MANAGED PAYOUT PORTFOLIO WITH GROWTH

ANNUAL MANAGEMENT REPORT OF FUND PERFORMANCE | For the Year Ended March 31, 2024

See *Fund Formation and Series Information* for the annual rates paid by each series (as a percentage of average net assets) for these fees.

Securityholders in Series F and Series FT also pay an advisory fee directly to the Distributors. This fee is not included in the Fund's expenses.

During the period, the Fund invested in other funds also managed by the Manager or affiliates of the Manager. At March 31, 2024, the Fund had \$349.0 million (100.0% of the Fund's NAV) invested in underlying funds managed by Mackenzie. The Manager relied on standing instructions approved by the IG Wealth Management Funds Independent Review Committee for the execution of all such transactions.

Investment, if any, in unlisted open-ended funds managed by the Manager and/or affiliates of the Manager will be in series that do not pay fees. The exchange-traded funds (ETFs) into which the Fund may invest may have their own fees and expenses which reduce the value of the ETF. Generally, the Manager has determined that fees paid by an ETF are not duplicative with the fees paid by the Fund. However, where the ETF is managed by Mackenzie Financial Corporation, the ETF may distribute a fee rebate to the Fund to offset fees paid within the ETF.

Past Performance

The Fund's performance information assumes all distributions made by the Fund in the periods presented are reinvested in additional securities of the relevant series of the Fund. The performance information does not take into account sales, redemption, distribution or other optional charges, or income taxes payable by any investor that would have reduced returns or performance. The past performance of the Fund is not necessarily an indication of how it will perform in the future.

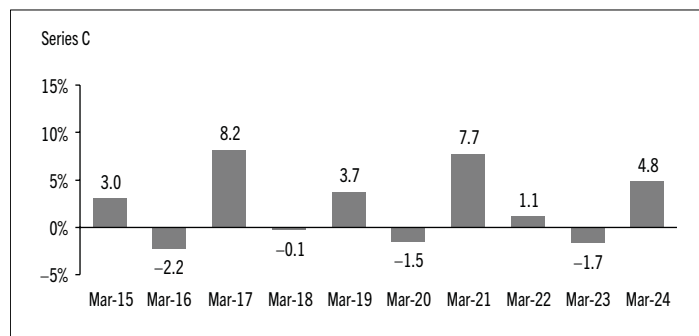
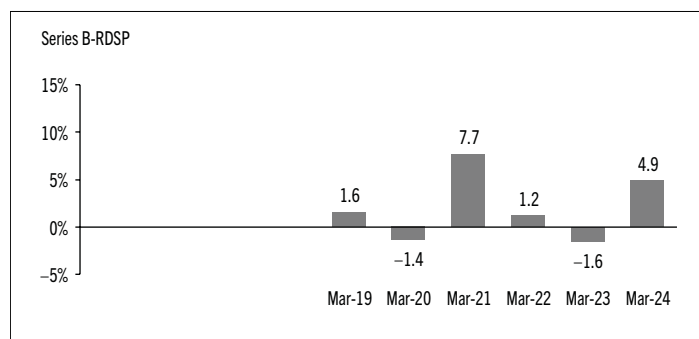
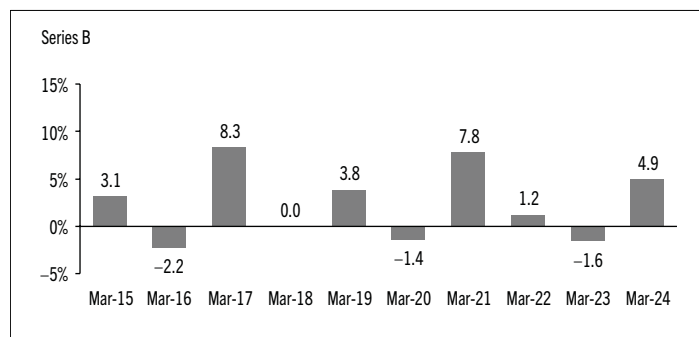
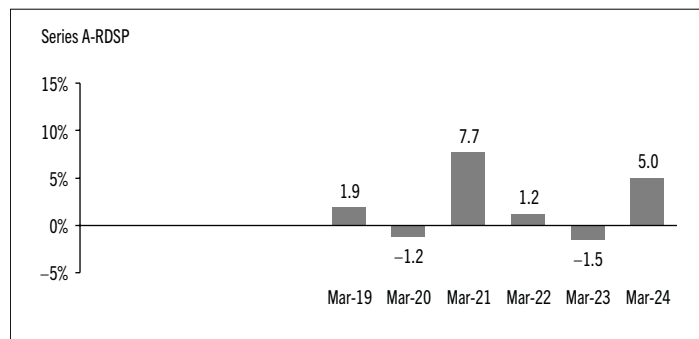
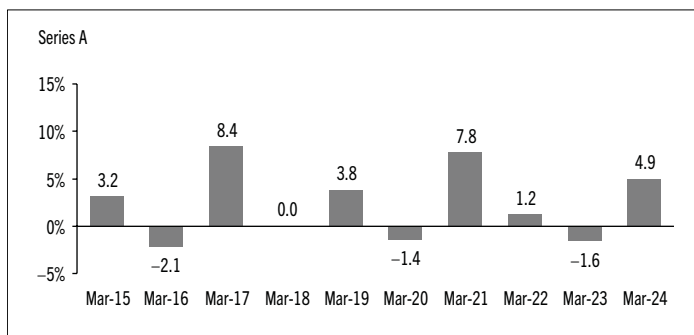
If you hold this Fund outside of a registered plan, income and capital gains distributions paid to you increase your income for tax purposes whether paid to you in cash or reinvested in additional securities of the Fund. The amount of reinvested taxable distributions is added to the adjusted cost base of the securities that you own. This would decrease your capital gain or increase your capital loss when you later redeem from the Fund, thereby ensuring that you are not taxed on this amount again. Please consult your tax advisor regarding your personal tax situation.

Performance during these periods may have been impacted by the following events:

- Effective September 6, 2017, the Fund changed its investment objective and strategies to primarily invest in, or gain exposure to, equity and fixed income asset classes within specified ranges and/or other asset classes, through investment in underlying funds and/or directly in equity and/or fixed income securities.

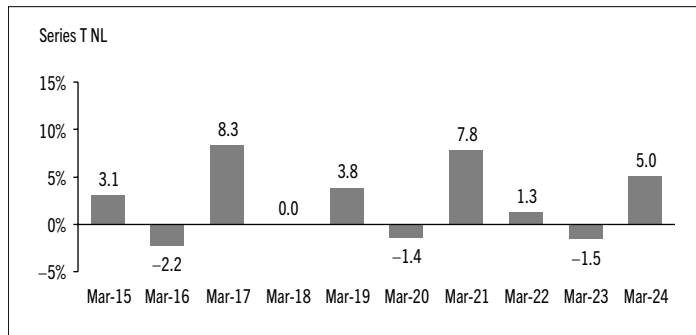
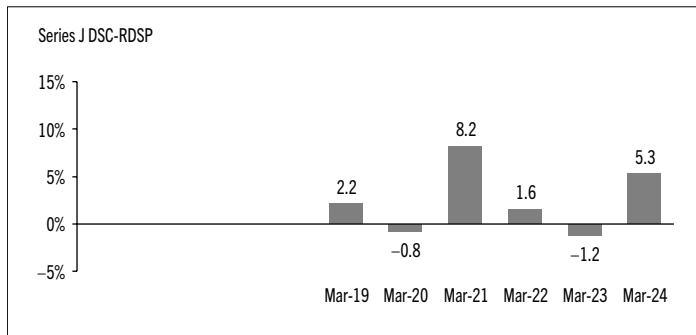
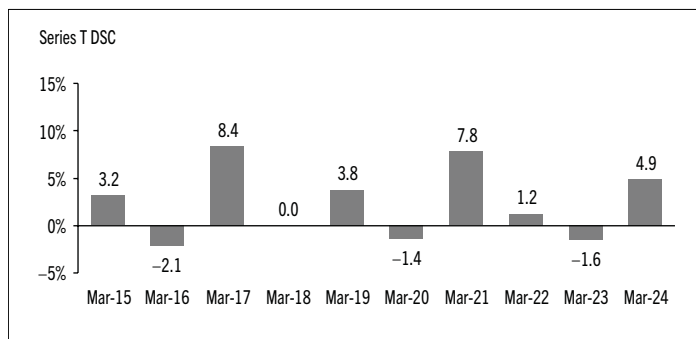
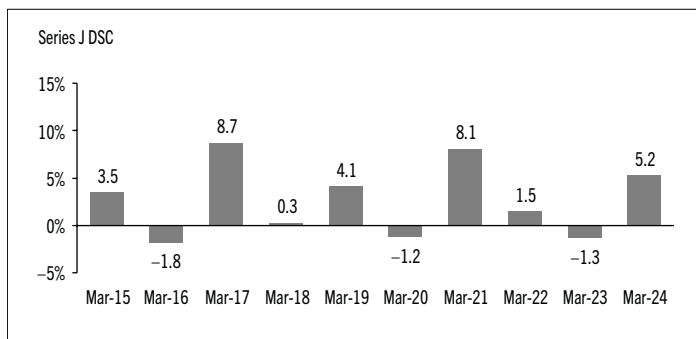
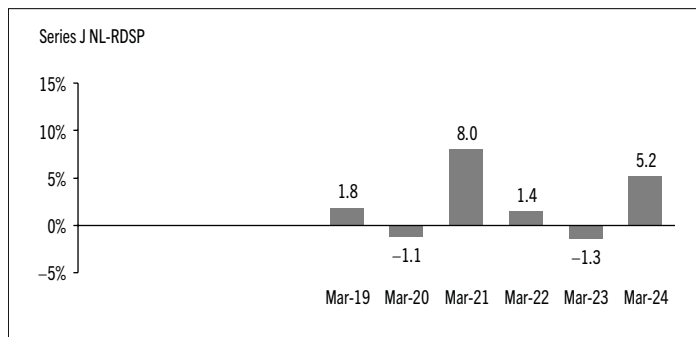
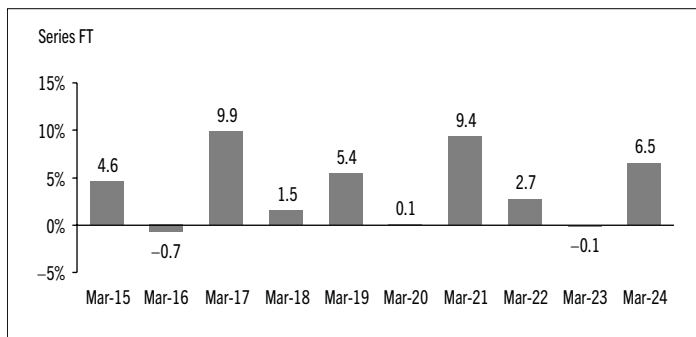
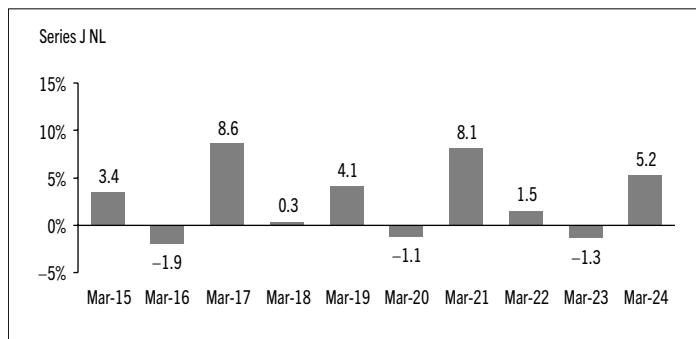
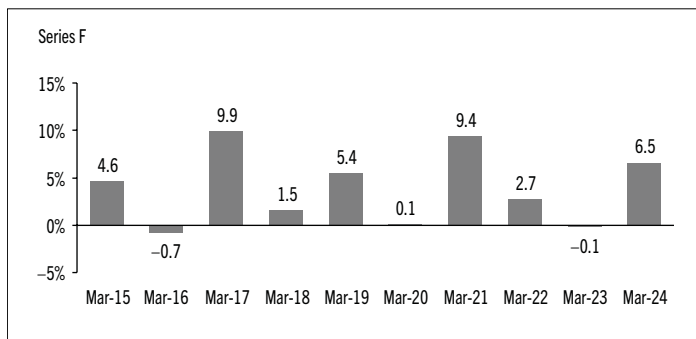
Year-by-Year Returns

The following bar charts present the performance of each series of the Fund for each of the fiscal periods shown. The charts show, in percentage terms, how much an investment made on the first day of each fiscal period, or on the series inception or reinstatement date, as applicable, would have increased or decreased by the last day of the fiscal period presented. Series inception or reinstatement dates can be found under *Fund Formation and Series Information*.



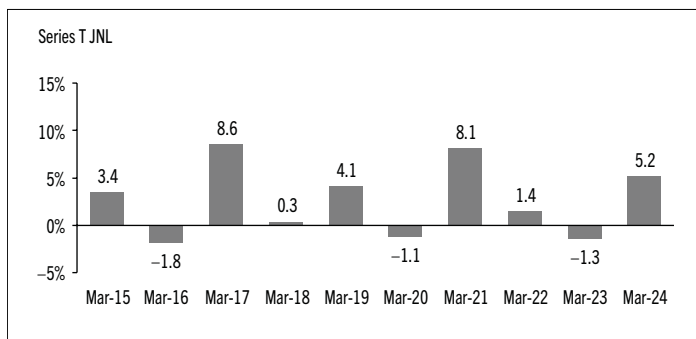
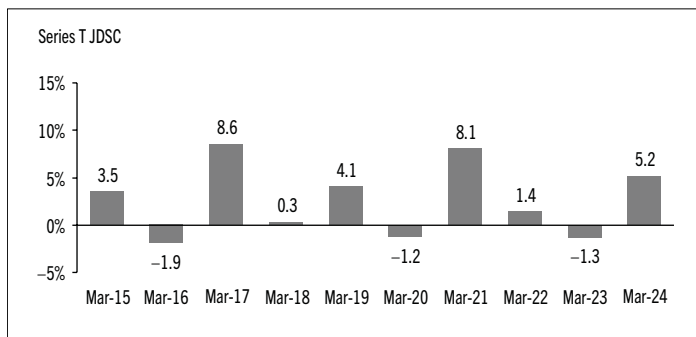
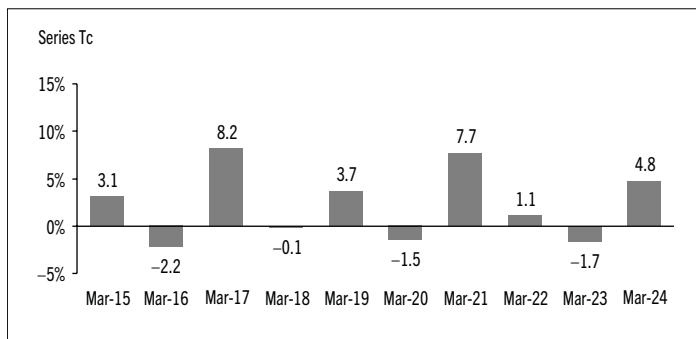
IG MANAGED PAYOUT PORTFOLIO WITH GROWTH

ANNUAL MANAGEMENT REPORT OF FUND PERFORMANCE | For the Year Ended March 31, 2024



IG MANAGED PAYOUT PORTFOLIO WITH GROWTH

ANNUAL MANAGEMENT REPORT OF FUND PERFORMANCE | For the Year Ended March 31, 2024



Annual Compound Returns

The following table compares the historical annual compound total returns for each series of the Fund with the relevant index or indices shown below for each of the periods ended March 31, 2024. Investors cannot invest in an index without incurring fees, expenses and commissions, which are not reflected in these performance figures.

All index returns are calculated in Canadian dollars on a total return basis, meaning that all dividend payments, interest income accruals and interest payments are reinvested.

Percentage Return: ¹	1 Yr	3 Yr	5 Yr	10 Yr	Since Inception ²
Series A	4.9	1.5	2.1	2.4	n/a
Series A-RDSP	5.0	1.5	2.2	n/a	2.3
Series B	4.9	1.5	2.1	2.3	n/a
Series B-RDSP	4.9	1.5	2.1	n/a	2.1
Series C	4.8	1.4	2.0	2.2	n/a
Series F	6.5	3.0	3.7	3.9	n/a
Series FT	6.5	3.0	3.7	3.9	n/a
Series J D S C	5.2	1.8	2.4	2.6	n/a
Series J D S C-RDSP	5.3	1.9	2.5	n/a	2.6
Series J N L	5.2	1.8	2.4	2.6	n/a
Series J N L-RDSP	5.2	1.7	2.4	n/a	2.4
Series T D S C	4.9	1.5	2.1	2.4	n/a
Series T N L	5.0	1.5	2.2	2.4	n/a
Series T c	4.8	1.4	2.0	2.2	n/a
Series T J D S C	5.2	1.7	2.4	2.6	n/a
Series T J N L	5.2	1.7	2.4	2.6	n/a
FTSE Canada Universe Bond Index	2.1	-1.5	0.3	2.0	Note 3
S&P 500 Index	30.0	14.3	15.4	15.3	Note 4
MSCI EAFE (Net) Index	15.3	7.4	7.6	6.9	Note 5

The FTSE Canada Universe Bond Index is a broad measure of Canadian bonds with terms to maturity of more than one year. It includes federal, provincial, municipal and corporate bonds rated "BBB" or higher.

The S&P 500 Index is a market capitalization weighted index of 500 widely held securities, designed to measure broad U.S. equity performance.

The MSCI EAFE (Net) Index represents large- and mid-cap equity performance across 21 developed markets, excluding the United States and Canada. Net total returns are calculated after the deduction of withholding tax from the foreign income and dividends of its constituents.

- (1) The percentage return differs for each series because the management fee rate and expenses differ for each series.
- (2) The return since inception for each series will differ when the inception date differs and is only provided when a series has been active for a period of less than 10 years.
- (3) The return of the FTSE Canada Universe Bond Index since inception for each applicable series is as follows: Series A-RDSP 1.0%, Series B-RDSP 1.0%, Series J D S C-RDSP 1.0%, Series J N L-RDSP 1.0%.
- (4) The return of the S&P 500 Index since inception for each applicable series is as follows: Series A-RDSP 14.2%, Series B-RDSP 14.2%, Series J D S C-RDSP 14.2%, Series J N L-RDSP 14.2%.
- (5) The return of the MSCI EAFE (Net) Index since inception for each applicable series is as follows: Series A-RDSP 6.3%, Series B-RDSP 6.3%, Series J D S C-RDSP 6.3%, Series J N L-RDSP 6.3%.

IG MANAGED PAYOUT PORTFOLIO WITH GROWTH

ANNUAL MANAGEMENT REPORT OF FUND PERFORMANCE | For the Year Ended March 31, 2024

Summary of Investment Portfolio at March 31, 2024

EFFECTIVE PORTFOLIO ALLOCATION	% OF NAV
Equities	50.0
Bonds	45.6
<i>Bonds</i>	40.5
<i>Long bond futures*</i>	5.1
Commodities	2.0
Short-term investments	1.3
Cash and cash equivalents	0.9
Other assets (liabilities)	0.2

EFFECTIVE REGIONAL ALLOCATION	% OF NAV
Canada	40.9
United States	36.7
Other	3.9
Australia	2.9
United Kingdom	2.2
Switzerland	2.2
Germany	2.0
Commodities	2.0
Japan	1.3
Netherlands	1.3
Mexico	1.1
Cash and cash equivalents	0.9
France	0.7
Denmark	0.7
Brazil	0.5
Singapore	0.5
Other assets (liabilities)	0.2

EFFECTIVE SECTOR ALLOCATION	% OF NAV
Corporate bonds	22.6
Financials	11.8
Federal bonds	10.7
Information technology	9.0
Foreign government bonds	7.0
Industrials	6.1
Other	4.7
Health care	4.5
Provincial bonds	4.0
Consumer discretionary	4.0
Energy	3.7
Communication services	3.2
Materials	2.9
Consumer staples	2.7
Commodities	2.0
Cash and cash equivalents	0.9
Other assets (liabilities)	0.2

* Notional values represent 5.1% of NAV for long bond futures.

The effective allocation shows the portfolio, regional or sector exposure of the Fund calculated by combining its direct and indirect investments.

TOP 25 POSITIONS	% OF NAV
Issuer/Underlying Fund	
Mackenzie Global Equity Income Fund Series IG	49.5
Mackenzie Unconstrained Fixed Income Fund Series IG	21.9
Mackenzie Canadian Bond Fund Series IG	16.0
Mackenzie Sovereign Bond Fund Series IG	9.4
Mackenzie Gold Bullion Fund Series IG	2.0
Mackenzie Global Inflation-Linked Fund Series IG	1.3
Top long positions as a percentage of total net asset value	100.1

The Fund held no direct short positions at the end of the period.

For the prospectus and other information about the underlying fund(s) held in the portfolio, visit www.ig.ca or www.sedarplus.ca. The issuer of Mackenzie funds is related to the Manager.

The investments and percentages may have changed since March 31, 2024, due to the ongoing portfolio transactions of the Fund. Quarterly updates of holdings are available within 60 days of the end of each quarter except for March 31, the Fund's fiscal year-end, when they are available within 90 days.

IG MANAGED PAYOUT PORTFOLIO WITH GROWTH

ANNUAL MANAGEMENT REPORT OF FUND PERFORMANCE | For the Year Ended March 31, 2024

Financial Highlights

The following tables show selected key financial information about the Fund and are intended to help you understand the Fund's financial performance for each of the fiscal periods presented below. If during the period a series was established or reinstated, "period" represents the period from inception or reinstatement to the end of that fiscal period. Series inception or reinstatement dates can be found under *Fund Formation and Series Information*.

THE FUND'S NET ASSETS PER SECURITY (\$)¹

Series A	Mar. 31 2024	Mar. 31 2023	Mar. 31 2022	Mar. 31 2021	Mar. 31 2020
Net assets, beginning of period	12.37	12.71	12.58	11.73	11.99
Increase (decrease) from operations:					
Total revenue	0.47	0.42	0.37	0.39	0.38
Total expenses	(0.30)	(0.29)	(0.31)	(0.29)	(0.29)
Realized gains (losses) for the period	0.08	(0.19)	0.31	0.22	0.15
Unrealized gains (losses) for the period	0.27	(0.29)	(0.09)	0.64	(0.41)
Total increase (decrease) from operations²	0.52	(0.35)	0.28	0.96	(0.17)
Distributions:					
From net investment income (excluding Canadian dividends)	(0.10)	(0.13)	(0.01)	(0.02)	(0.01)
From Canadian dividends	–	–	(0.01)	(0.05)	(0.09)
From capital gains	–	–	–	–	–
Return of capital	–	–	–	–	–
Total annual distributions³	(0.10)	(0.13)	(0.02)	(0.07)	(0.10)
Net assets, end of period	12.87	12.37	12.71	12.58	11.73
Series A-RDSP	Mar. 31 2024	Mar. 31 2023	Mar. 31 2022	Mar. 31 2021	Mar. 31 2020
Net assets, beginning of period	10.46	10.74	10.63	9.92	10.12
Increase (decrease) from operations:					
Total revenue	0.40	0.36	0.32	0.33	0.32
Total expenses	(0.25)	(0.24)	(0.26)	(0.26)	(0.22)
Realized gains (losses) for the period	0.14	(0.03)	(0.02)	0.14	0.13
Unrealized gains (losses) for the period	0.23	(0.25)	(0.08)	0.55	(0.35)
Total increase (decrease) from operations²	0.52	(0.16)	(0.04)	0.76	(0.12)
Distributions:					
From net investment income (excluding Canadian dividends)	(0.09)	(0.11)	–	(0.02)	(0.01)
From Canadian dividends	(0.01)	–	(0.01)	(0.04)	(0.07)
From capital gains	–	–	–	–	–
Return of capital	–	–	–	–	–
Total annual distributions³	(0.10)	(0.11)	(0.01)	(0.06)	(0.08)
Net assets, end of period	10.88	10.46	10.74	10.63	9.92

Series B	Mar. 31 2024	Mar. 31 2023	Mar. 31 2022	Mar. 31 2021	Mar. 31 2020
Net assets, beginning of period	12.33	12.67	12.54	11.70	11.96
Increase (decrease) from operations:					
Total revenue	0.47	0.42	0.37	0.38	0.38
Total expenses	(0.30)	(0.29)	(0.31)	(0.29)	(0.29)
Realized gains (losses) for the period	0.11	(0.14)	0.29	0.21	0.15
Unrealized gains (losses) for the period	0.27	(0.29)	(0.09)	0.64	(0.41)
Total increase (decrease) from operations²	0.55	(0.30)	0.26	0.94	(0.17)
Distributions:					
From net investment income (excluding Canadian dividends)	(0.11)	(0.13)	(0.01)	(0.02)	(0.01)
From Canadian dividends	–	–	(0.01)	(0.05)	(0.08)
From capital gains	–	–	–	–	–
Return of capital	–	–	–	–	–
Total annual distributions³	(0.11)	(0.13)	(0.02)	(0.07)	(0.09)
Net assets, end of period	12.83	12.33	12.67	12.54	11.70
Series B-RDSP	Mar. 31 2024	Mar. 31 2023	Mar. 31 2022	Mar. 31 2021	Mar. 31 2020
Net assets, beginning of period	10.40	10.68	10.57	9.87	10.08
Increase (decrease) from operations:					
Total revenue	0.39	0.36	0.32	0.33	0.32
Total expenses	(0.25)	(0.25)	(0.27)	(0.25)	(0.25)
Realized gains (losses) for the period	0.17	0.04	0.08	0.10	0.13
Unrealized gains (losses) for the period	0.23	(0.25)	(0.08)	0.54	(0.35)
Total increase (decrease) from operations²	0.54	(0.10)	0.05	0.72	(0.15)
Distributions:					
From net investment income (excluding Canadian dividends)	(0.09)	(0.11)	–	(0.02)	(0.01)
From Canadian dividends	–	–	(0.01)	(0.04)	(0.07)
From capital gains	–	–	–	–	–
Return of capital	–	–	–	–	–
Total annual distributions³	(0.09)	(0.11)	(0.01)	(0.06)	(0.08)
Net assets, end of period	10.82	10.40	10.68	10.57	9.87

- (1) These calculations are prescribed by securities regulations and are not intended to be a reconciliation between opening and closing net assets per security. This information is derived from the Fund's audited annual financial statements. The net assets per security presented in the financial statements may differ from the net asset value per security calculated for fund pricing purposes. An explanation of these differences, if any, can be found in the *Notes to Financial Statements*.
- (2) Net assets and distributions are based on the actual number of securities outstanding at the relevant time. The increase/decrease from operations is based on the weighted average number of securities outstanding over the fiscal period.
- (3) Distributions were paid in cash, reinvested in additional securities of the Fund, or both.

IG MANAGED PAYOUT PORTFOLIO WITH GROWTH

ANNUAL MANAGEMENT REPORT OF FUND PERFORMANCE | For the Year Ended March 31, 2024

THE FUND'S NET ASSETS PER SECURITY (\$)¹ (cont'd)

	Mar. 31 2024	Mar. 31 2023	Mar. 31 2022	Mar. 31 2021	Mar. 31 2020
Series C					
Net assets, beginning of period	11.53	11.84	11.71	10.93	11.18
Increase (decrease) from operations:					
Total revenue	0.44	0.40	0.35	0.36	0.36
Total expenses	(0.26)	(0.25)	(0.27)	(0.26)	(0.25)
Realized gains (losses) for the period	0.07	(0.20)	0.30	0.20	0.14
Unrealized gains (losses) for the period	0.25	(0.27)	(0.08)	0.60	(0.38)
Total increase (decrease) from operations²	0.50	(0.32)	0.30	0.90	(0.13)
Distributions:					
From net investment income (excluding Canadian dividends)	(0.08)	(0.11)	–	(0.02)	(0.01)
From Canadian dividends	–	–	(0.01)	(0.04)	(0.07)
From capital gains	–	–	–	–	–
Return of capital	–	–	–	–	–
Total annual distributions³	(0.08)	(0.11)	(0.01)	(0.06)	(0.08)
Net assets, end of period	11.99	11.53	11.84	11.71	10.93
Series F					
Net assets, beginning of period	11.02	11.32	11.23	10.45	10.67
Increase (decrease) from operations:					
Total revenue	0.42	0.38	0.34	0.35	0.34
Total expenses	(0.10)	(0.10)	(0.10)	(0.10)	(0.10)
Realized gains (losses) for the period	0.13	(0.04)	0.09	0.09	0.14
Unrealized gains (losses) for the period	0.24	(0.26)	(0.08)	0.58	(0.37)
Total increase (decrease) from operations²	0.69	(0.02)	0.25	0.92	0.01
Distributions:					
From net investment income (excluding Canadian dividends)	(0.22)	(0.25)	(0.18)	(0.03)	(0.02)
From Canadian dividends	(0.05)	(0.04)	(0.04)	(0.16)	(0.22)
From capital gains	–	–	–	–	–
Return of capital	–	–	–	–	–
Total annual distributions³	(0.27)	(0.29)	(0.22)	(0.19)	(0.24)
Net assets, end of period	11.45	11.02	11.32	11.23	10.45
Series FT					
Net assets, beginning of period	8.65	9.14	9.35	9.00	9.43
Increase (decrease) from operations:					
Total revenue	0.32	0.30	0.28	0.29	0.30
Total expenses	(0.08)	(0.08)	(0.09)	(0.08)	(0.09)
Realized gains (losses) for the period	0.10	(0.02)	0.10	0.11	0.12
Unrealized gains (losses) for the period	0.19	(0.21)	(0.07)	0.49	(0.31)
Total increase (decrease) from operations²	0.53	(0.01)	0.22	0.81	0.02
Distributions:					
From net investment income (excluding Canadian dividends)	(0.17)	(0.19)	(0.15)	(0.03)	(0.02)
From Canadian dividends	(0.03)	(0.03)	(0.03)	(0.13)	(0.19)
From capital gains	–	–	–	–	–
Return of capital	(0.22)	(0.24)	(0.29)	(0.31)	(0.25)
Total annual distributions³	(0.42)	(0.46)	(0.47)	(0.47)	(0.46)
Net assets, end of period	8.77	8.65	9.14	9.35	9.00

	Mar. 31 2024	Mar. 31 2023	Mar. 31 2022	Mar. 31 2021	Mar. 31 2020
Series J DSC					
Net assets, beginning of period	11.07	11.37	11.25	10.49	10.72
Increase (decrease) from operations:					
Total revenue	0.42	0.38	0.33	0.35	0.34
Total expenses	(0.23)	(0.23)	(0.24)	(0.23)	(0.23)
Realized gains (losses) for the period	0.05	(0.19)	0.34	0.18	0.14
Unrealized gains (losses) for the period	0.24	(0.26)	(0.08)	0.58	(0.37)
Total increase (decrease) from operations²	0.48	(0.30)	0.35	0.88	(0.12)
Distributions:					
From net investment income (excluding Canadian dividends)	(0.13)	(0.15)	(0.03)	(0.03)	(0.01)
From Canadian dividends	(0.01)	–	(0.02)	(0.06)	(0.10)
From capital gains	–	–	–	–	–
Return of capital	–	–	–	–	–
Total annual distributions³	(0.14)	(0.15)	(0.05)	(0.09)	(0.11)
Net assets, end of period	11.50	11.07	11.37	11.25	10.49
Series J DSC-RDSP					
Net assets, beginning of period	10.49	10.77	10.66	9.94	10.12
Increase (decrease) from operations:					
Total revenue	0.40	0.36	0.32	0.33	0.32
Total expenses	(0.21)	(0.21)	(0.23)	(0.22)	(0.18)
Realized gains (losses) for the period	0.13	(0.03)	0.16	0.15	0.13
Unrealized gains (losses) for the period	0.23	(0.25)	(0.08)	0.55	(0.35)
Total increase (decrease) from operations²	0.55	(0.13)	0.17	0.81	(0.08)
Distributions:					
From net investment income (excluding Canadian dividends)	(0.13)	(0.14)	(0.03)	(0.03)	(0.01)
From Canadian dividends	(0.01)	(0.01)	(0.02)	(0.06)	(0.10)
From capital gains	–	–	–	–	–
Return of capital	–	–	–	–	–
Total annual distributions³	(0.14)	(0.15)	(0.05)	(0.09)	(0.11)
Net assets, end of period	10.90	10.49	10.77	10.66	9.94
Series J NL					
Net assets, beginning of period	11.07	11.37	11.25	10.49	10.71
Increase (decrease) from operations:					
Total revenue	0.42	0.38	0.33	0.35	0.34
Total expenses	(0.23)	(0.23)	(0.24)	(0.23)	(0.23)
Realized gains (losses) for the period	0.07	(0.10)	0.34	0.16	0.14
Unrealized gains (losses) for the period	0.24	(0.26)	(0.08)	0.58	(0.37)
Total increase (decrease) from operations²	0.50	(0.21)	0.35	0.86	(0.12)
Distributions:					
From net investment income (excluding Canadian dividends)	(0.13)	(0.15)	(0.03)	(0.03)	(0.01)
From Canadian dividends	(0.01)	–	(0.02)	(0.06)	(0.10)
From capital gains	–	–	–	–	–
Return of capital	–	–	–	–	–
Total annual distributions³	(0.14)	(0.15)	(0.05)	(0.09)	(0.11)
Net assets, end of period	11.50	11.07	11.37	11.25	10.49

IG MANAGED PAYOUT PORTFOLIO WITH GROWTH

ANNUAL MANAGEMENT REPORT OF FUND PERFORMANCE | For the Year Ended March 31, 2024

THE FUND'S NET ASSETS PER SECURITY (\$)¹ (cont'd)

	Mar. 31 2024	Mar. 31 2023	Mar. 31 2022	Mar. 31 2021	Mar. 31 2020
Series J NL-RDSP					
Net assets, beginning of period	10.42	10.70	10.58	9.87	10.08
Increase (decrease) from operations:					
Total revenue	0.40	0.36	0.32	0.33	0.32
Total expenses	(0.23)	(0.22)	(0.24)	(0.23)	(0.21)
Realized gains (losses) for the period	0.18	0.18	0.14	0.13	0.13
Unrealized gains (losses) for the period	0.23	(0.25)	(0.08)	0.54	(0.35)
Total increase (decrease) from operations²	0.58	0.07	0.14	0.77	(0.11)
Distributions:					
From net investment income (excluding Canadian dividends)	(0.12)	(0.13)	(0.03)	(0.02)	(0.01)
From Canadian dividends	(0.01)	-	(0.01)	(0.06)	(0.10)
From capital gains	-	-	-	-	-
Return of capital	-	-	-	-	-
Total annual distributions³	(0.13)	(0.13)	(0.04)	(0.08)	(0.11)
Net assets, end of period	10.83	10.42	10.70	10.58	9.87
Series T DSC					
Net assets, beginning of period	6.37	6.84	7.11	6.94	7.39
Increase (decrease) from operations:					
Total revenue	0.24	0.22	0.21	0.22	0.23
Total expenses	(0.15)	(0.16)	(0.17)	(0.17)	(0.18)
Realized gains (losses) for the period	0.06	(0.10)	0.16	0.14	0.09
Unrealized gains (losses) for the period	0.14	(0.16)	(0.05)	0.37	(0.24)
Total increase (decrease) from operations²	0.29	(0.20)	0.15	0.56	(0.10)
Distributions:					
From net investment income (excluding Canadian dividends)	(0.05)	(0.07)	-	(0.01)	(0.01)
From Canadian dividends	-	-	(0.01)	(0.04)	(0.05)
From capital gains	-	-	-	-	-
Return of capital	(0.26)	(0.28)	(0.35)	(0.32)	(0.30)
Total annual distributions³	(0.31)	(0.35)	(0.36)	(0.37)	(0.36)
Net assets, end of period	6.36	6.37	6.84	7.11	6.94
Series T NL					
Net assets, beginning of period	6.32	6.78	7.04	6.87	7.31
Increase (decrease) from operations:					
Total revenue	0.24	0.22	0.20	0.22	0.23
Total expenses	(0.15)	(0.15)	(0.17)	(0.17)	(0.17)
Realized gains (losses) for the period	0.06	(0.12)	0.24	0.15	0.09
Unrealized gains (losses) for the period	0.14	(0.15)	(0.05)	0.37	(0.24)
Total increase (decrease) from operations²	0.29	(0.20)	0.22	0.57	(0.09)
Distributions:					
From net investment income (excluding Canadian dividends)	(0.06)	(0.07)	(0.01)	(0.01)	(0.01)
From Canadian dividends	-	-	(0.01)	(0.03)	(0.05)
From capital gains	-	-	-	-	-
Return of capital	(0.25)	(0.27)	(0.34)	(0.32)	(0.29)
Total annual distributions³	(0.31)	(0.34)	(0.36)	(0.36)	(0.35)
Net assets, end of period	6.31	6.32	6.78	7.04	6.87

Series Tc	Mar. 31 2024	Mar. 31 2023	Mar. 31 2022	Mar. 31 2021	Mar. 31 2020
Net assets, beginning of period	6.02	6.47	6.73	6.58	7.02
Increase (decrease) from operations:					
Total revenue	0.22	0.21	0.20	0.21	0.22
Total expenses	(0.13)	(0.13)	(0.15)	(0.15)	(0.16)
Realized gains (losses) for the period	0.01	(0.04)	0.19	0.12	0.09
Unrealized gains (losses) for the period	0.13	(0.15)	(0.05)	0.35	(0.23)
Total increase (decrease) from operations²	0.23	(0.11)	0.19	0.53	(0.08)
Distributions:					
From net investment income (excluding Canadian dividends)	(0.04)	(0.06)	-	(0.01)	(0.01)
From Canadian dividends	-	-	-	(0.03)	(0.04)
From capital gains	-	-	-	-	-
Return of capital	(0.25)	(0.27)	(0.34)	(0.31)	(0.29)
Total annual distributions³	(0.29)	(0.33)	(0.34)	(0.35)	(0.34)
Net assets, end of period	6.00	6.02	6.47	6.73	6.58
Series T JDSC					
Net assets, beginning of period	7.73	8.27	8.57	8.35	8.87
Increase (decrease) from operations:					
Total revenue	0.29	0.27	0.25	0.27	0.28
Total expenses	(0.16)	(0.17)	(0.19)	(0.18)	(0.19)
Realized gains (losses) for the period	0.08	(0.05)	0.27	0.17	0.11
Unrealized gains (losses) for the period	0.17	(0.19)	(0.06)	0.45	(0.29)
Total increase (decrease) from operations²	0.38	(0.14)	0.27	0.71	(0.09)
Distributions:					
From net investment income (excluding Canadian dividends)	(0.09)	(0.10)	(0.02)	(0.02)	(0.01)
From Canadian dividends	(0.01)	-	(0.01)	(0.05)	(0.08)
From capital gains	-	-	-	-	-
Return of capital	(0.28)	(0.32)	(0.40)	(0.37)	(0.34)
Total annual distributions³	(0.38)	(0.42)	(0.43)	(0.44)	(0.43)
Net assets, end of period	7.73	7.73	8.27	8.57	8.35
Series T JNL					
Net assets, beginning of period	7.73	8.27	8.57	8.35	8.87
Increase (decrease) from operations:					
Total revenue	0.29	0.27	0.25	0.27	0.28
Total expenses	(0.17)	(0.17)	(0.19)	(0.17)	(0.17)
Realized gains (losses) for the period	0.15	(0.02)	0.34	0.25	0.11
Unrealized gains (losses) for the period	0.17	(0.19)	(0.06)	0.45	(0.29)
Total increase (decrease) from operations²	0.44	(0.11)	0.34	0.80	(0.07)
Distributions:					
From net investment income (excluding Canadian dividends)	(0.08)	(0.10)	(0.02)	(0.02)	(0.01)
From Canadian dividends	(0.01)	-	(0.01)	(0.05)	(0.08)
From capital gains	-	-	-	-	-
Return of capital	(0.29)	(0.32)	(0.40)	(0.37)	(0.34)
Total annual distributions³	(0.38)	(0.42)	(0.43)	(0.44)	(0.43)
Net assets, end of period	7.73	7.73	8.27	8.57	8.35

IG MANAGED PAYOUT PORTFOLIO WITH GROWTH

ANNUAL MANAGEMENT REPORT OF FUND PERFORMANCE | For the Year Ended March 31, 2024

RATIOS AND SUPPLEMENTAL DATA

	Mar. 31 2024	Mar. 31 2023	Mar. 31 2022	Mar. 31 2021	Mar. 31 2020
Series A					
Total net asset value (\$000) ¹	32,223	43,213	63,006	99,113	137,161
Securities outstanding (000) ¹	2,503	3,493	4,959	7,881	11,689
Management expense ratio (%) ²	2.44	2.43	2.42	2.41	2.41
Management expense ratio before waivers or absorptions (%) ²	2.44	2.43	2.42	2.41	2.41
Trading expense ratio (%) ³	0.03	0.04	–	–	0.04
Portfolio turnover rate (%) ⁴	4.27	12.23	3.56	7.07	6.42
Net asset value per security (\$)	12.87	12.37	12.71	12.58	11.73
Series A-RDSP					
Total net asset value (\$000) ¹	10	10	10	6	5
Securities outstanding (000) ¹	1	1	1	1	1
Management expense ratio (%) ²	2.40	2.40	2.45	2.44	2.33
Management expense ratio before waivers or absorptions (%) ²	2.40	2.40	2.45	2.44	2.33
Trading expense ratio (%) ³	0.03	0.04	–	–	0.04
Portfolio turnover rate (%) ⁴	4.27	12.23	3.56	7.07	6.42
Net asset value per security (\$)	10.89	10.46	10.74	10.63	9.92
Series B					
Total net asset value (\$000) ¹	27,360	33,246	43,209	63,422	82,962
Securities outstanding (000) ¹	2,133	2,696	3,411	5,059	7,092
Management expense ratio (%) ²	2.45	2.43	2.43	2.41	2.41
Management expense ratio before waivers or absorptions (%) ²	2.45	2.43	2.43	2.41	2.41
Trading expense ratio (%) ³	0.03	0.04	–	–	0.04
Portfolio turnover rate (%) ⁴	4.27	12.23	3.56	7.07	6.42
Net asset value per security (\$)	12.83	12.33	12.67	12.54	11.70
Series B-RDSP					
Total net asset value (\$000) ¹	829	769	721	534	355
Securities outstanding (000) ¹	77	74	68	51	36
Management expense ratio (%) ²	2.44	2.45	2.46	2.46	2.43
Management expense ratio before waivers or absorptions (%) ²	2.44	2.45	2.46	2.46	2.43
Trading expense ratio (%) ³	0.03	0.04	–	–	0.04
Portfolio turnover rate (%) ⁴	4.27	12.23	3.56	7.07	6.42
Net asset value per security (\$)	10.82	10.40	10.68	10.57	9.87
Series C					
Total net asset value (\$000) ¹	12,006	16,242	23,824	40,599	52,521
Securities outstanding (000) ¹	1,001	1,409	2,013	3,466	4,804
Management expense ratio (%) ²	2.56	2.54	2.54	2.53	2.53
Management expense ratio before waivers or absorptions (%) ²	2.56	2.54	2.54	2.53	2.53
Trading expense ratio (%) ³	0.03	0.04	–	–	0.04
Portfolio turnover rate (%) ⁴	4.27	12.23	3.56	7.07	6.42
Net asset value per security (\$)	12.00	11.53	11.84	11.71	10.93

	Mar. 31 2024	Mar. 31 2023	Mar. 31 2022	Mar. 31 2021	Mar. 31 2020
Series F					
Total net asset value (\$000) ¹	240,533	249,071	255,122	194,612	96,798
Securities outstanding (000) ¹	21,007	22,606	22,532	17,324	9,264
Management expense ratio (%) ²	0.94	0.93	0.93	0.92	0.91
Management expense ratio before waivers or absorptions (%) ²	0.94	0.93	0.93	0.92	0.91
Trading expense ratio (%) ³	0.03	0.04	–	–	0.04
Portfolio turnover rate (%) ⁴	4.27	12.23	3.56	7.07	6.42
Net asset value per security (\$)	11.45	11.02	11.32	11.23	10.45
Series FT					
Total net asset value (\$000) ¹	14,467	15,738	17,134	15,023	11,444
Securities outstanding (000) ¹	1,649	1,819	1,874	1,606	1,272
Management expense ratio (%) ²	0.93	0.93	0.93	0.93	0.93
Management expense ratio before waivers or absorptions (%) ²	0.93	0.93	0.93	0.93	0.93
Trading expense ratio (%) ³	0.03	0.04	–	–	0.04
Portfolio turnover rate (%) ⁴	4.27	12.23	3.56	7.07	6.42
Net asset value per security (\$)	8.77	8.65	9.14	9.35	9.00
Series J DSC					
Total net asset value (\$000) ¹	9,958	13,884	20,848	41,671	56,500
Securities outstanding (000) ¹	865	1,254	1,833	3,704	5,387
Management expense ratio (%) ²	2.16	2.16	2.16	2.15	2.15
Management expense ratio before waivers or absorptions (%) ²	2.16	2.16	2.16	2.15	2.15
Trading expense ratio (%) ³	0.03	0.04	–	–	0.04
Portfolio turnover rate (%) ⁴	4.27	12.23	3.56	7.07	6.42
Net asset value per security (\$)	11.51	11.07	11.37	11.25	10.49

- This information is provided as at the end of the fiscal period shown.
- Management expense ratio ("MER") is based on total expenses, excluding commissions and other portfolio transaction costs, income taxes and withholding taxes, for the stated period and is expressed as an annualized percentage of daily average net assets during the period, except as noted. In the period a series is established, the MER is annualized from the date of inception to the end of the period. Where the Fund directly invests in securities of another fund (including exchange-traded funds or "ETFs"), the MERs presented for the Fund include the portion of MERs of the other fund(s) attributable to this investment. Any income distributions received from ETFs managed by affiliates of the Manager, with the intention of offsetting fees paid within those ETFs but which are not considered to be duplicative fees under regulatory requirements, are treated as waived expenses for MER purposes. The Manager may waive or absorb operating expenses at its discretion and stop waiving or absorbing such expenses at any time without notice.
- The trading expense ratio ("TER") represents total commissions and other portfolio transaction costs incurred as an annualized percentage of daily average net assets during the period. Where the Fund invests in securities of another fund (including ETFs), the TERs presented for the Fund include the portion of TERs of the other fund(s) attributable to this investment.
- The Fund's portfolio turnover rate indicates how actively the Fund's portfolio advisor manages its portfolio investments. A portfolio turnover rate of 100% is equivalent to the Fund buying and selling all of the securities in its portfolio once in the course of the period. The higher the Fund's portfolio turnover rate in a period, the greater the trading costs payable by the Fund in the period, and the greater the chance of an investor receiving taxable capital gains in the year. There is not necessarily a relationship between a high turnover rate and the performance of a fund. The portfolio turnover rate is not provided when the Fund is less than one year old. The value of any trades to realign the Fund's portfolio after a fund merger, if any, is excluded from the portfolio turnover rate.

IG MANAGED PAYOUT PORTFOLIO WITH GROWTH

ANNUAL MANAGEMENT REPORT OF FUND PERFORMANCE | For the Year Ended March 31, 2024

RATIOS AND SUPPLEMENTAL DATA (cont'd)

	Mar. 31 2024	Mar. 31 2023	Mar. 31 2022	Mar. 31 2021	Mar. 31 2020
Series J DSC-RDSP					
Total net asset value (\$000) ¹	70	66	67	66	61
Securities outstanding (000) ¹	6	6	6	6	6
Management expense ratio (%) ²	2.07	2.06	2.07	2.06	2.04
Management expense ratio before waivers or absorptions (%) ²	2.07	2.06	2.07	2.06	2.04
Trading expense ratio (%) ³	0.03	0.04	–	–	0.04
Portfolio turnover rate (%) ⁴	4.27	12.23	3.56	7.07	6.42
Net asset value per security (\$)	10.90	10.49	10.77	10.66	9.94
Series J NL					
Total net asset value (\$000) ¹	6,867	8,426	10,027	21,006	24,950
Securities outstanding (000) ¹	597	761	882	1,868	2,379
Management expense ratio (%) ²	2.18	2.17	2.17	2.15	2.15
Management expense ratio before waivers or absorptions (%) ²	2.18	2.17	2.17	2.15	2.15
Trading expense ratio (%) ³	0.03	0.04	–	–	0.04
Portfolio turnover rate (%) ⁴	4.27	12.23	3.56	7.07	6.42
Net asset value per security (\$)	11.50	11.07	11.37	11.25	10.49
Series J NL-RDSP					
Total net asset value (\$000) ¹	380	305	100	90	70
Securities outstanding (000) ¹	35	29	9	8	7
Management expense ratio (%) ²	2.21	2.20	2.21	2.20	2.08
Management expense ratio before waivers or absorptions (%) ²	2.21	2.20	2.21	2.20	2.08
Trading expense ratio (%) ³	0.03	0.04	–	–	0.04
Portfolio turnover rate (%) ⁴	4.27	12.23	3.56	7.07	6.42
Net asset value per security (\$)	10.83	10.42	10.70	10.58	9.87
Series T DSC					
Total net asset value (\$000) ¹	2,004	2,401	4,049	6,101	8,539
Securities outstanding (000) ¹	315	377	592	859	1,231
Management expense ratio (%) ²	2.46	2.45	2.43	2.42	2.41
Management expense ratio before waivers or absorptions (%) ²	2.46	2.45	2.43	2.42	2.41
Trading expense ratio (%) ³	0.03	0.04	–	–	0.04
Portfolio turnover rate (%) ⁴	4.27	12.23	3.56	7.07	6.42
Net asset value per security (\$)	6.36	6.37	6.84	7.11	6.94
Series T NL					
Total net asset value (\$000) ¹	302	388	730	1,747	3,135
Securities outstanding (000) ¹	48	61	108	248	456
Management expense ratio (%) ²	2.38	2.37	2.39	2.38	2.38
Management expense ratio before waivers or absorptions (%) ²	2.38	2.37	2.39	2.38	2.38
Trading expense ratio (%) ³	0.03	0.04	–	–	0.04
Portfolio turnover rate (%) ⁴	4.27	12.23	3.56	7.07	6.42
Net asset value per security (\$)	6.31	6.32	6.78	7.04	6.87

	Mar. 31 2024	Mar. 31 2023	Mar. 31 2022	Mar. 31 2021	Mar. 31 2020
Series Tc					
Total net asset value (\$000) ¹	264	407	495	871	1,169
Securities outstanding (000) ¹	44	68	77	129	178
Management expense ratio (%) ²	2.58	2.54	2.55	2.55	2.54
Management expense ratio before waivers or absorptions (%) ²	2.58	2.54	2.55	2.55	2.54
Trading expense ratio (%) ³	0.03	0.04	–	–	0.04
Portfolio turnover rate (%) ⁴	4.27	12.23	3.56	7.07	6.42
Net asset value per security (\$)	6.00	6.02	6.47	6.73	6.58
Series T JDSC					
Total net asset value (\$000) ¹	1,312	1,311	1,436	2,966	5,124
Securities outstanding (000) ¹	170	170	174	346	614
Management expense ratio (%) ²	2.19	2.19	2.19	2.17	2.16
Management expense ratio before waivers or absorptions (%) ²	2.19	2.19	2.19	2.17	2.16
Trading expense ratio (%) ³	0.03	0.04	–	–	0.04
Portfolio turnover rate (%) ⁴	4.27	12.23	3.56	7.07	6.42
Net asset value per security (\$)	7.73	7.73	8.27	8.57	8.35
Series T JNL					
Total net asset value (\$000) ¹	399	221	217	504	1,860
Securities outstanding (000) ¹	52	29	26	59	223
Management expense ratio (%) ²	2.21	2.20	2.19	2.14	2.12
Management expense ratio before waivers or absorptions (%) ²	2.21	2.20	2.19	2.14	2.12
Trading expense ratio (%) ³	0.03	0.04	–	–	0.04
Portfolio turnover rate (%) ⁴	4.27	12.23	3.56	7.07	6.42
Net asset value per security (\$)	7.73	7.73	8.27	8.57	8.35

Management Fees

The Fund pays a management fee, and this fee, paid by each series, is calculated as a percentage of the net asset value of the series at the close of each business day (see *Fund Formation and Series Information* for rates payable by each series). Generally, management fees pay the costs incurred to provide investment advisory and management services, as well as distribution-related services provided by the Distributors.

However, in the case of Series F and FT, securityholders pay the Distributors an advisory fee (separate from the management fee) directly. Therefore, the management fee in those series is used for investment advisory and management services only.

For all other retail series (i.e. those that exclude Series R, P and S, if issued), approximately 60% of management fees paid during the period was used for investment advisory and management services, and approximately 40% related to distribution-related services. This may vary by series.

IG MANAGED PAYOUT PORTFOLIO WITH GROWTH

ANNUAL MANAGEMENT REPORT OF FUND PERFORMANCE | For the Year Ended March 31, 2024

Fund Formation and Series Information

Date of Formation: October 1, 2004

Series	Inception/ Reinstatement Date	Management fee (%)	Distribution fee (%)	Service fee (%)	Administration fee (%)	Trustee fee (%)
Series A	December 13, 2004	1.72	0.10	0.18	0.16	0.05
Series A-RDSP	July 16, 2018	1.72	0.10	0.18	0.16	0.05
Series B	December 13, 2004	1.72	0.10	0.18	0.16	0.05
Series B-RDSP	July 16, 2018	1.72	0.10	0.18	0.16	0.05
Series C	July 11, 2005	1.72	0.10	up to 0.30	0.16	0.05
Series F	July 12, 2013	0.53	0.10	–	0.16	0.05
Series FT	July 12, 2013	0.53	0.10	–	0.16	0.05
Series J DSC	July 12, 2013	1.47	0.10	0.18	0.16	0.05
Series J DSC-RDSP	July 16, 2018	1.47	0.10	0.18	0.16	0.05
Series J NL	July 12, 2013	1.47	0.10	0.18	0.16	0.05
Series J NL-RDSP	July 16, 2018	1.47	0.10	0.18	0.16	0.05
Series T DSC	December 13, 2004	1.72	0.10	0.18	0.16	0.05
Series T NL	December 13, 2004	1.72	0.10	0.18	0.16	0.05
Series Tc	July 11, 2005	1.72	0.10	up to 0.30	0.16	0.05
Series T JDSC	July 12, 2013	1.47	0.10	0.18	0.16	0.05
Series T JNL	July 12, 2013	1.47	0.10	0.18	0.16	0.05

The fee rates in the table above are rounded to two decimals.

Clients in Series C and Tc are entitled to a full or partial rebate of the service fee based on their asset levels held in the Fund and in other IG Wealth Management Funds as outlined in the Fund's Prospectus.

Effective May 10, 2024, Series A, Series A-RDSP, Series J DSC, Series J DSC-RDSP, Series T DSC and Series T JDSC were redesignated as Series B, Series B-RDSP, Series J NL, Series J NL-RDSP, Series T NL and Series T JNL, respectively.