

## **Interim Management Report of Fund Performance**

*For the Six-Month Period Ended September 30, 2023*

*This Interim Management Report of Fund Performance contains financial highlights but does not contain either the interim financial report or annual financial statements of the investment fund. You may obtain a copy of the interim financial report or annual financial statements, at no cost, by calling 1-888-746-6344 (1-800-661-4578 if you live in Quebec) or by writing to us at 447 Portage Avenue, Winnipeg, Manitoba, R3B 3H5 (2001, boulevard Robert-Bourassa, bureau 2000, Montreal (Quebec), H3A 2A6 if you live in Quebec), or by visiting the SEDAR+ website at [www.sedarplus.ca](http://www.sedarplus.ca).*

*Securityholders may also contact us using one of these methods to request a copy of the investment fund's proxy voting policies and procedures, proxy voting disclosure record or quarterly portfolio disclosure. For more information, please refer to the Fund's Annual Information Form, which may also be obtained, at no cost, using any of the methods outlined above.*

*For the Fund's current net asset values per security and for more recent information on general market events, please visit our website at [www.ig.ca](http://www.ig.ca).*

*References to "Consultant" or "Consultants" mean "Representative" or "Representatives" in Quebec.*

### **A NOTE ON FORWARD-LOOKING STATEMENTS**

*This report may contain forward-looking statements that reflect our current expectations or forecasts of future events. Forward-looking statements include statements that are predictive in nature, depend upon or refer to future events or conditions, or include words such as "expects", "anticipates", "intends", "plans", "believes", "estimates", "preliminary", "typical" and other similar expressions. In addition, these statements may relate to future corporate actions, future financial performance of a fund or a security and their future investment strategies and prospects. Forward-looking statements are inherently subject to, among other things, risks, uncertainties and assumptions that could cause actual events, results, performance or prospects to differ materially from those expressed in, or implied by, these forward-looking statements. These risks, uncertainties and assumptions include, without limitation, general economic, political and market factors in North America and internationally, interest and foreign exchange rates, the volatility of global equity and capital markets, business competition, technological change, changes in government regulations, changes in securities laws and regulations, changes in tax laws, unexpected judicial or regulatory proceedings, catastrophic events, outbreaks of disease or pandemics (such as COVID-19), and the ability of manager to attract or retain key employees. The foregoing list of important risks, uncertainties and assumptions is not exhaustive. Please consider these and other factors carefully and do not place undue reliance on forward-looking statements.*

*The forward-looking information contained in this report is current only as of the date of this report. There should not be an expectation that such information will in all circumstances be updated, supplemented or revised whether as a result of new information, changing circumstances, future events or otherwise.*

# ARISTOTLE – IG U.S. SMALL CAP EQUITY POOL

INTERIM MANAGEMENT REPORT OF FUND PERFORMANCE | For the Period Ended September 30, 2023

## Management Discussion of Fund Performance

November 13, 2023

This Management Discussion of Fund Performance presents the portfolio management team's view on the significant factors and developments that have affected the Fund's performance and outlook in the six-month period ended September 30, 2023 (the "period"). If the Fund was established during the period, "period" represents the period since inception.

In this report, "IGIM" and "the Manager" refer to I.G. Investment Management, Ltd., the manager of the Fund. In addition, net asset value ("NAV") refers to the value of the Fund as calculated for transaction purposes, on which the discussion of Fund performance is based.

Please read *A Note on Forward-Looking Statements* on the first page of this document.

## Results of Operations

### Investment Performance

In accordance with National Instrument 81-106, the following comparison to one or more market indices has been included to help you understand the Fund's performance relative to the general performance of the markets. However, the portfolio management team cautions that the Fund's mandate may be different from the index or indices shown. Also, it is important to note that investors cannot invest in an index. Indirect investments in an index are available; however, there are fees and transaction costs and other variables that will impact returns when investing in these products. Index returns included in the comparison below do not reflect these costs and variables.

For longer-term performance of the Fund, see the *Past Performance* section of this report.

For the six-month period ended September 30, 2023, the Series P securities returned -4.1% (after deducting fees and expenses paid by the Fund). In comparison, the Fund's broad-based index, the S&P 500 Index, returned 5.6% and the Fund's narrow index, the Russell 2000 Index, returned 0.2%. Given the Fund's mandate, the narrow index has been included as a more meaningful comparison.

U.S. equities rose over the period as the pace of interest rate increases eased. U.S. consumer spending remained relatively strong despite tight financial conditions. The U.S. labour market was strong and inflation remained elevated. In response, the U.S. Federal Reserve continued to raise its federal funds rate, albeit at a slower pace. Large-capitalization growth stocks outperformed value stocks as interest rate increases were expected to slow.

Within the S&P 500 Index, communication services, energy and information technology were the strongest sectors in Canadian dollar terms, while utilities, real estate and consumer staples were the weakest.

U.S. small-capitalization stocks generally underperformed large-capitalization stocks. Within the Russell 2000 Index, energy, industrials and financials were the strongest sectors in Canadian dollar terms, while utilities, materials and communication services were the weakest.

The Fund underperformed the broad-based index, with stock selection in the information technology, health care, consumer discretionary and financials sectors detracting from performance. An underweight position and stock selection in the communication services sector also detracted from performance. Overweight exposure to the energy sector contributed to performance relative to the broad-based index.

The Fund underperformed the narrow index, with an underweight position and stock selection in the energy sector and stock selection in the health care sector detracting from performance. Underweight exposure to the materials sector contributed to performance.

Over the period, neither portfolio activity nor market developments significantly changed the positioning of the Fund.

### Net Assets

The Fund's net assets decreased by 8.7% during the period to \$141.4 million. This change was composed primarily of \$6.1 million in net losses (including any interest and/or dividend income) from investment performance, after deducting fees and expenses, and a decrease of \$7.4 million due to net securityholder activity (including sales, redemptions and cash distributions).

### Fees and Expenses

The annualized management expense ratio ("MER") for each series during the period ended September 30, 2023, was generally similar to the MER for the year ended March 31, 2023. Total expenses paid vary from period to period mainly as a result of changes in average assets in each series. No management fee or administration fee, other than certain specific fund costs, is charged to the Fund. The MERs for all series are presented in the *Financial Highlights* section of this report.

## Recent Developments

Equity markets were surprisingly resilient during the period, despite persistent inflation, surging U.S. Treasury bond yields, the lingering effects of a regional banking crisis and labour unrest. The portfolio management team believes that market volatility reinforces the need for investment selectivity and a focus on quality companies with strong balance sheets and healthy profitability that can provide a buffer against a slowing economy. The team believes small-cap share valuations remain attractive relative to large-cap stocks and by historical standards. Efforts to bring manufacturing and production back from offshore and investments in automation amid wage inflation and tight labour markets also favourably position U.S. small-cap stocks.

## Related Party Transactions

I.G. Investment Management, Ltd. is the Manager, Trustee and Portfolio Advisor of the Fund. The Fund is only available for purchase by other IG Wealth Management Funds and is not available for purchase by retail investors. The Manager, Portfolio Advisor and Trustee are, indirectly, wholly owned subsidiaries of IGM Financial Inc.

Certain other investment funds, distributed by IG Wealth Management, and other qualified investors may invest in Series P of this Fund. As at September 30, 2023, this series comprised 100.0% of the Fund's net assets. The Manager relied on standing instructions approved by the IG Wealth Management Funds Independent Review Committee for the execution of all such transactions, which are based on the net asset value per security determined in accordance with the stated policies of the Fund on each transaction day. Investments by other investment funds in the Fund increase the risk of large redemption or purchase orders, which could result in larger than normal cash positions in the Fund for short periods of time. This could have an impact on the Fund's operations. However, the Manager uses various strategies to minimize the potential dilutive impact associated with large cash positions. These strategies may include transferring securities in-kind where possible, utilizing ETFs to maintain market exposure in lieu of cash and spreading transactions in smaller increments over a period of time.

# ARISTOTLE – IG U.S. SMALL CAP EQUITY POOL

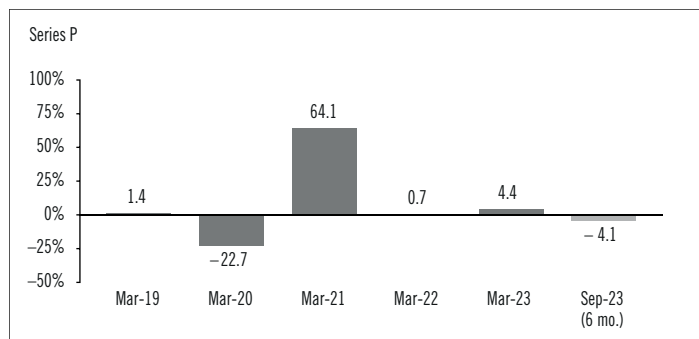
INTERIM MANAGEMENT REPORT OF FUND PERFORMANCE | For the Period Ended September 30, 2023

## Past Performance

The Fund's performance information assumes all distributions made by the Fund in the periods presented are reinvested in additional securities of the relevant series of the Fund. The performance information does not take into account sales, redemption, distribution or other optional charges, or income taxes payable by any investor that would have reduced returns or performance. The past performance of the Fund is not necessarily an indication of how it will perform in the future.

## Year-by-Year Returns

The following bar chart presents the performance of Series P of the Fund for each of the fiscal periods shown. The chart shows, in percentage terms, how much an investment made on the first day of each fiscal period, or on the series inception or reinstatement date, as applicable, would have increased or decreased by the last day of the fiscal period presented. Series inception or reinstatement dates can be found under *Series Information*.



# ARISTOTLE – IG U.S. SMALL CAP EQUITY POOL

INTERIM MANAGEMENT REPORT OF FUND PERFORMANCE | For the Period Ended September 30, 2023

## Summary of Investment Portfolio at September 30, 2023

PORTFOLIO ALLOCATION	% OF NAV
Equities	96.5
Exchange-traded funds	2.6
Cash and cash equivalents	0.8
Other assets (liabilities)	0.1

REGIONAL ALLOCATION	% OF NAV
United States	94.5
Ireland	3.6
Cash and cash equivalents	0.8
Canada	0.7
Greece	0.3
Other assets (liabilities)	0.1

SECTOR ALLOCATION	% OF NAV
Industrials	27.0
Health care	16.1
Information technology	15.6
Financials	13.0
Energy	5.9
Consumer discretionary	5.1
Real estate	3.4
Consumer staples	3.3
Materials	2.9
Exchange-traded funds	2.6
Utilities	2.5
Communication services	1.7
Cash and cash equivalents	0.8
Other assets (liabilities)	0.1

TOP 25 POSITIONS	% OF NAV
<b>Issuer/Underlying Fund</b>	
Huron Consulting Group Inc.	3.0
Acadia Healthcare Co. Inc.	2.2
M/A-COM Technology Solutions Holdings Inc.	2.1
Merit Medical Systems Inc.	2.0
AerCap Holdings NV	1.9
Advanced Energy Industries Inc.	1.8
Belden Inc.	1.8
Oceaneering International Inc.	1.7
Ardmore Shipping Corp.	1.7
Chemed Corp.	1.7
ASGN Inc.	1.6
Itron Inc.	1.6
Albany International Corp.	1.5
SP Plus Corp.	1.5
HealthEquity Inc.	1.4
Prestige Brands Holdings Inc.	1.4
Patterson-UTI Energy Inc.	1.4
STAG Industrial Inc.	1.4
KBR Inc.	1.4
Wabtec Corp.	1.4
iShares Russell 2000 ETF	1.4
Dycom Industries Inc.	1.3
Carter's Inc.	1.3
Matthews International Corp.	1.3
Allete Inc.	1.3
<b>Top long positions as a percentage of total net asset value</b>	<b>41.1</b>

*The Fund held no short positions at the end of the period.*

*For the prospectus and other information about the underlying fund(s) held in the portfolio, visit [www.ig.ca](http://www.ig.ca) or [www.sedarplus.ca](http://www.sedarplus.ca).*

*The investments and percentages may have changed since September 30, 2023, due to the ongoing portfolio transactions of the Fund. Quarterly updates of holdings are available within 60 days of the end of each quarter except for March 31, the Fund's fiscal year-end, when they are available within 90 days.*

# ARISTOTLE – IG U.S. SMALL CAP EQUITY POOL

INTERIM MANAGEMENT REPORT OF FUND PERFORMANCE | For the Period Ended September 30, 2023

## Financial Highlights

The following tables show selected key financial information about the Fund and are intended to help you understand the Fund's financial performance for each of the fiscal periods presented below. If during the period a series was established or reinstated, "period" represents the period from inception or reinstatement to the end of that fiscal period. Series inception or reinstatement dates can be found under *Series Information*.

### THE FUND'S NET ASSETS PER SECURITY (\$)¹

Series P	Sep. 30 2023	Mar. 31 2023	Mar. 31 2022	Mar. 31 2021	Mar. 31 2020	Mar. 31 2019
Net assets, beginning of period	11.38	11.46	11.99	7.62	10.12	10.00
<b>Increase (decrease) from operations:</b>						
Total revenue	0.07	0.17	0.10	0.10	0.11	0.06
Total expenses	–	–	–	–	(0.01)	(0.02)
Realized gains (losses) for the period	0.26	0.30	0.60	0.38	0.25	(0.03)
Unrealized gains (losses) for the period	(0.79)	0.03	(0.63)	4.36	(2.58)	0.12
<b>Total increase (decrease) from operations²</b>	<b>(0.46)</b>	<b>0.50</b>	<b>0.07</b>	<b>4.84</b>	<b>(2.23)</b>	<b>0.13</b>
<b>Distributions:</b>						
From net investment income (excluding Canadian dividends)	–	(0.16)	(0.10)	(0.10)	(0.10)	(0.02)
From Canadian dividends	–	–	–	–	–	–
From capital gains	–	(0.42)	(0.56)	(0.37)	(0.17)	–
Return of capital	–	–	–	–	–	–
<b>Total annual distributions³</b>	<b>–</b>	<b>(0.58)</b>	<b>(0.66)</b>	<b>(0.47)</b>	<b>(0.27)</b>	<b>(0.02)</b>
<b>Net assets, end of period</b>	<b>10.91</b>	<b>11.38</b>	<b>11.46</b>	<b>11.99</b>	<b>7.62</b>	<b>10.12</b>

(1) These calculations are prescribed by securities regulations and are not intended to be a reconciliation between opening and closing net assets per security. This information is derived from the Fund's unaudited interim financial statements and audited annual financial statements. The net assets per security presented in the financial statements may differ from the net asset value per security calculated for fund pricing purposes. An explanation of these differences, if any, can be found in the *Notes to Financial Statements*.

(2) Net assets and distributions are based on the actual number of securities outstanding at the relevant time. The increase/decrease from operations is based on the weighted average number of securities outstanding over the fiscal period.

(3) Distributions were paid in cash, reinvested in additional securities of the Fund, or both.

## RATIOS AND SUPPLEMENTAL DATA

Series P	Sep. 30 2023	Mar. 31 2023	Mar. 31 2022	Mar. 31 2021	Mar. 31 2020	Mar. 31 2019
Total net asset value (\$000)¹	141,369	154,880	170,918	157,494	99,148	113,114
Securities outstanding (000)¹	12,955	13,614	14,921	13,138	13,012	11,181
Management expense ratio (%)²	0.01	0.01	0.01	0.01	0.01	0.01
Management expense ratio before waivers or absorptions (%)²	0.01	0.01	0.01	0.01	0.01	0.01
Trading expense ratio (%)³	0.01	0.04	0.03	0.04	0.05	0.46
Portfolio turnover rate (%)⁴	4.16	13.25	16.77	20.83	15.71	3.55
Net asset value per security (\$)	10.91	11.38	11.46	11.99	7.62	10.12

(1) This information is provided as at the end of the fiscal period shown.

(2) Management expense ratio ("MER") is based on total expenses, excluding commissions and other portfolio transaction costs, income taxes and withholding taxes, for the stated period and is expressed as an annualized percentage of daily average net assets during the period, except as noted. In the period a series is established, the MER is annualized from the date of inception to the end of the period. Where the Fund directly invests in securities of another fund (including exchange-traded funds or "ETFs"), the MERs presented for the Fund include the portion of MERs of the other fund(s) attributable to this investment. Any income distributions received from ETFs managed by affiliates of the Manager, with the intention of offsetting fees paid within those ETFs but which are not considered to be duplicative fees under regulatory requirements, are treated as waived expenses for MER purposes. The Manager may waive or absorb operating expenses at its discretion and stop waiving or absorbing such expenses at any time without notice.

(3) The trading expense ratio ("TER") represents total commissions and other portfolio transaction costs incurred as an annualized percentage of daily average net assets during the period. Where the Fund invests in securities of another fund (including ETFs), the TERs presented for the Fund include the portion of TERs of the other fund(s) attributable to this investment.

(4) The Fund's portfolio turnover rate indicates how actively the Fund's portfolio advisor manages its portfolio investments. A portfolio turnover rate of 100% is equivalent to the Fund buying and selling all of the securities in its portfolio once in the course of the period. The higher the Fund's portfolio turnover rate in a period, the greater the trading costs payable by the Fund in the period, and the greater the chance of an investor receiving taxable capital gains in the year. There is not necessarily a relationship between a high turnover rate and the performance of a fund. The portfolio turnover rate is not provided when the Fund is less than one year old. The value of any trades to realign the Fund's portfolio after a fund merger, if any, is excluded from the portfolio turnover rate.

## Management Fees

The Fund is only available for purchase by other IG Wealth Management Funds and is not available for purchase by retail investors. In order to avoid duplication of fees in the other IG Wealth Management Funds, the Fund does not pay a management fee.

# ARISTOTLE – IG U.S. SMALL CAP EQUITY POOL

INTERIM MANAGEMENT REPORT OF FUND PERFORMANCE | For the Period Ended September 30, 2023

---

## Series Information

Series	Inception/ Reinstatement Date	Management fee (%)	Service fee (%)	Administration fee (%)	Trustee fee (%)
Series P	11/14/2018	–	–	–	–

The fee rates in the table above are rounded to two decimals.

Inception dates of the series are shown if within 10½ years.